

proportioning systems



ASSE 1055-1997 APPROVAL



innovation > technology > future

promix

seko's promix is an innovative system enabling fast and simple proportioning of multiple chemical applications. It's economical, reliable and user-friendly, allowing diluted chemicals to be dispensed into small and large containers.

promix guarantees innovation and accurate design of all mechanical parts:

- Maximum versatility and minimum inventory thanks to the modular components
- Space saving
- Quick and easy installation

For all cleaning applications, **seko** has provided the following:

- **Single or multiple** chemical use
- **Flow rate** at 1, 4 or 8 GPM
- Easy touch button and one hand lever operation
- A backflow preventing device to avoid chemical contamination to the water source
- **Outlet Tube or Bucket Mount** for **remote actuation** (4 and 8 GPM systems only)
- **Fill tube designed to minimize excess foam** (1 GPM systems only)

Available accessories:

- Wire rack for chemical containers
- Drip Tray to avoid spillage
- Ultra lean Tip



Enclosure

promix system allows additional units to be easily added to an existing installation

Easy installation thanks to the **wall fixing bracket** that avoid to open the **ProMix** front cover during the installation

The precise dilution of chemical and water can be achieved by changing the **Metering Tips**

easy as...



1 ... Mount the bracket and **put away your tools**



2 ... snap the **promix** onto the bracket



3 ... insert metering tips and tubing

Product range

Model	Activated	No. Products	Gap type	Flow rate
B1F04	Button	1	F-Gap	1 GPM
B1F16	Button	1	F-Gap	4 GPM
B1F30	Button	1	F-Gap	8 GPM
B1A04	Button	1	A-Gap	1 GPM
B1A16	Button	1	A-Gap	4 GPM
L1A04	Lever	1	A-Gap	1 GPM
B4F04	Button	4	F-Gap	1 GPM
B4F16	Button	4	F-Gap	4 GPM
B4F30	Button	4	F-Gap	8 GPM
B4A04	Button	4	A-Gap	1 GPM
B4A16	Button	4	A-Gap	4 GPM
L4F04	Lever	4	F-Gap	1 GPM
L4A04	Lever	4	A-Gap	1 GPM

Time is your most valuable asset.

With **promix**, a twenty minute install now takes as little as five minutes. No more...

Removing the screws

Removing the cover

Misplacing the screws

Searching for the screws

Realigning and replacing the cover

Re-securing the screws you were able to find



15 colors
coded dilution tips

prosink

The **prosink** is a chemical dispensing system that automatically and consistently mixes the precise amount of detergent and sanitizer with water by turning a knob, conveniently filling large sinks with accurate product solutions.

- Strong, long lasting and easy to clean rugged stainless steel enclosure
- Smooth and ergonomic surface, with no sharp edges and customisable front cover
- Connection direct to the water source, no electric power or compressed air needed
- Space saving
- Quick and easy installation: no special tools required

Available accessories:

- Wire rack for chemical containers

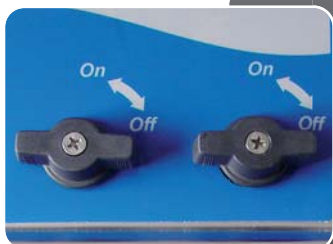


15 colors
coded dilution tips



For all proportioning applications, **seko** provides the following:

- Ability to dose 2 different products in succession or simultaneously (2 products version)
- Single or Double chemical use
- **4 GPM Flow rate**
- **15 different mixing ratios** can be easily chosen, making the dosing accurate and effective
- Ball valve operation, no need to hold or lock a button
- An UPC backflow approved prevention device to avoid chemical contamination of the water source
- Fill tube designed to minimize excess foam
- Ultra lean Tip

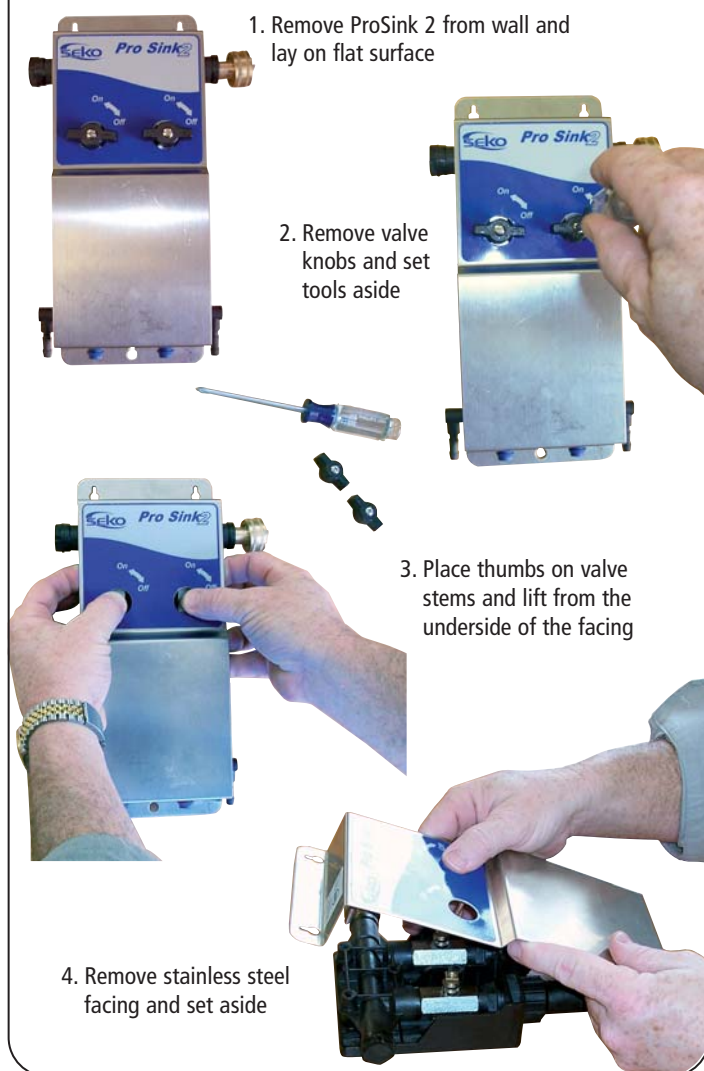


- Ball valve operation
- No need to hold or lock a button
- Smooth and ergonomic surface, with no sharp edges and customizable front cover
- Attractive user-friendly design
- Rugged stainless steel enclosure
- Strong, long lasting and easy to clean
- Installs easily with 2 or 3 screws

- Connection direct to the water source
- No electric power or compressed air needed
- Backflow prevention system
- Protecting against cross-contamination of the water supply



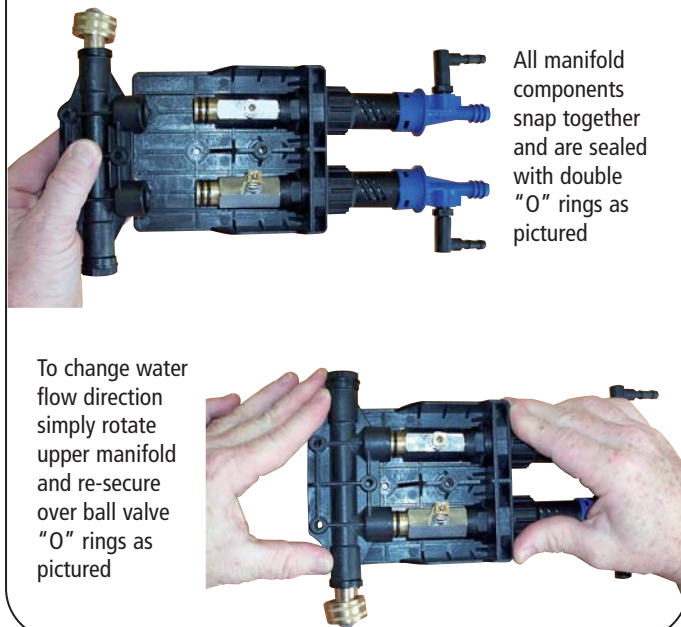
A. Removing the SS facing



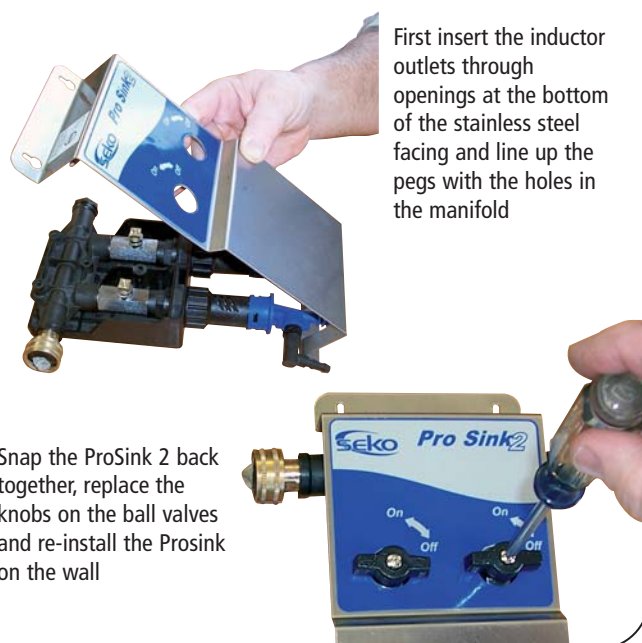
C. Changing a ball valve



B. Changing the water inlet direction



D. Reassembling prosink



prospray

The **prospray** cleaning and sanitation system automatically dilutes and dispenses concentrated cleaning products as a foam or spray. The spray system is easily and quickly converted into a foam system with the quick coupling foam wand.

- Strong, long lasting and easy to clean rugged stainless steel enclosure
- Smooth and ergonomic surface, with no sharp edges
- Connection direct to the water source, no electric power or compressed air needed
- Space saving
- Quick and easy installation: no special tools required

For all proportioning applications, **seko** provides the following:

- Possibility to dose 2 products individually or simultaneously (2 product model)
- Single or multiple chemical use
- **3.5 GPM Flow rate**
- **15 different mixing ratios** can be easily chosen, making the dosing accurate and effective
- Ball valve operation, no need to hold or lock a button
- Fill tube designed to minimize excess foam



The chemical feed rate is set by metering tips pressed into the barb on the side of the **prospray**.

Brass fittings for hot water resistance, polypropylene injectors for chemical resistance, rugged stainless steel casing for secure mounting and durability.

Will dispense 1 or 2 chemical products or a clear water rinse.

These features make the **prospray** suitable for **cleaning throughout the food processing, dairy, transportation, industrial and agricultural industries.**

It can be used: in supermarket meat rooms, seafood shops, butcher shops, automotive care areas, shower rooms; in short: **anywhere spray/foam cleaning or sanitation is needed.**

Available accessories:

- Wire rack for chemical containers and Ultra lean Tip



No Lock-Tite threaded connections



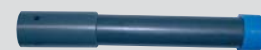
Easy and Fast maintenance with Seko's innovative "quick connect" manifold



Non Return valve and metering tips are easily accessible



GUN BV (Ball Valve)



Hose (25 or 50 ft.)



15 colors coded dilution tips

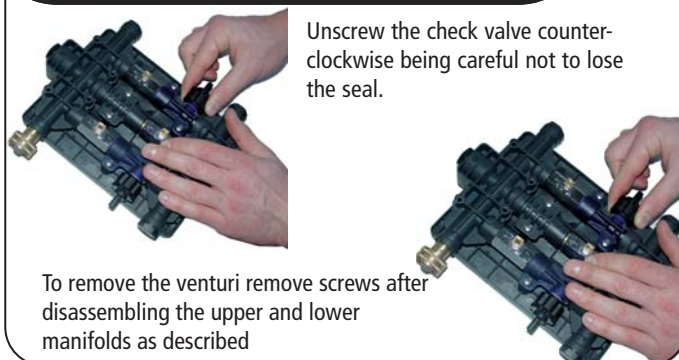


GUN T (Trigger)

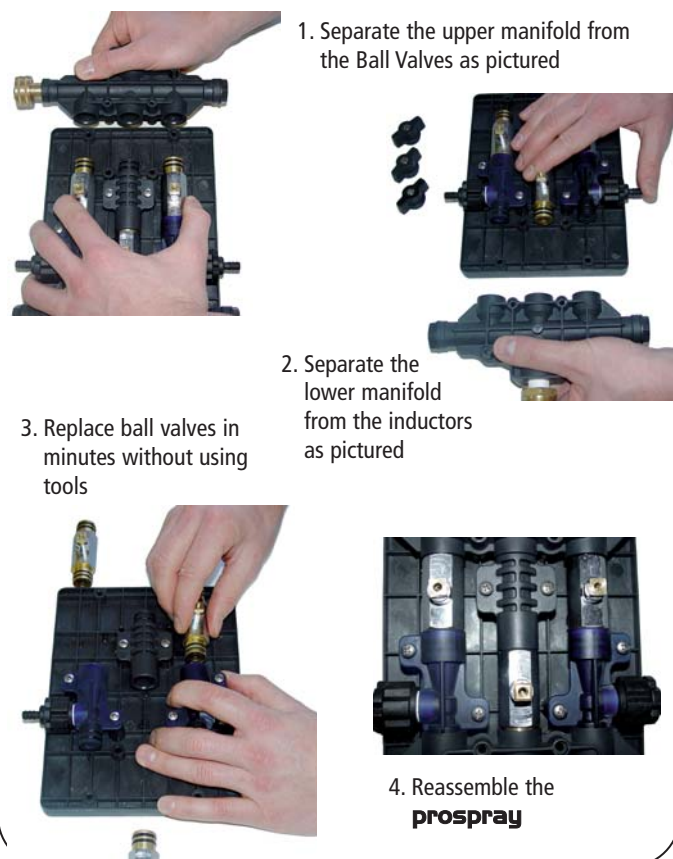
A. Removing the SS facing



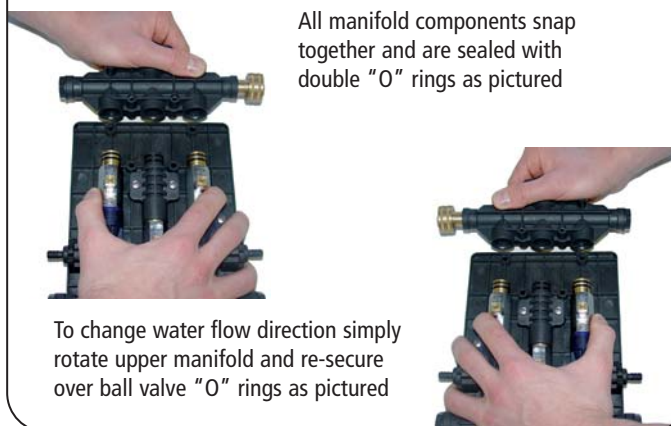
C. Replacing or cleaning the fixed parts



B. Changing a ball valve



D. Changing the water inlet direction





Universal Wall-mounting bracket

Fast, Easy Installation

No drill required, when replacing existing pumps, the hole patterns on the smart bracket match most existing models. Easy mounting and removing with the smart mounting bracket.

Accurate Dosing

Each push yields the same volume output every time

Adjustable Flow Rate

Internally adjustable to deliver 1/4, 1/2, 3/4 or 1 ounce per push

Complete Range

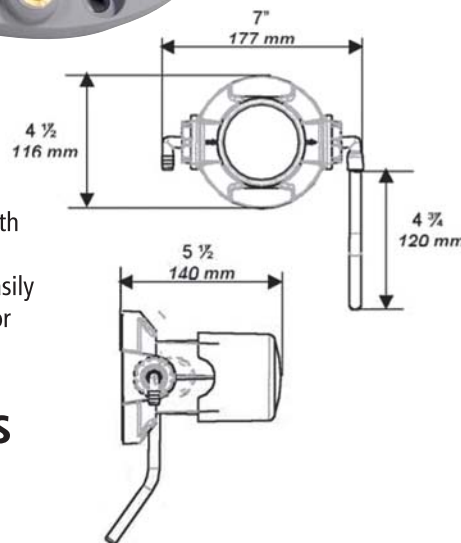
Models available for detergents, solvents and chlorine products

Reliable

- Spring not in contact with liquid
- Inlet and outlet valve easily accessible for cleaning or replacing

Applications

Kitchen, Janitorial and Commercial



Our complete range
for all your dosing and cleaning demands

Warewash Systems

Ware Basic



Ware Plus

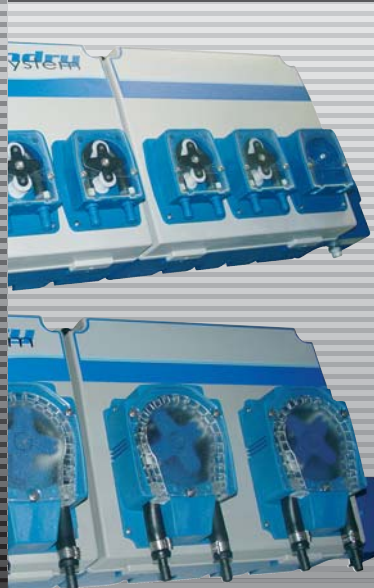


TDS



Laundry Systems

OPL Advantage



OPL Basic



OPL Mini L



ISSA MEMBER
The Experts
on Cleaning and Maintenance

SEKO DOSING SYSTEMS CORP.

Tel.: (215) 945 0125

Fax: (215) 945 0937

Toll Free: (866) 651 4323

Web site: www.sekousa.com

Email: sales@sekousa.com

SEKO do Brasil **BRAZIL** • SEKO **CHINA** • SEKO **DENMARK** • SEKO/LEFRANC-BOSI **FRANCE** • SEKO Deutschland **GERMANY** • SEKO Italia **ITALY**
SEKO SIETA **ROMANIA** • OOO SEKO **RUSSIA** • SEKO Asia Pacific **SINGAPORE** • SEKO Iberica **SPAIN** • SEKO **SOUTHERN AFRICA** • SEKO **SWEDEN**
SEKO/CCL **UNITED KINGDOM** • SEKO Dosing Systems **USA**